

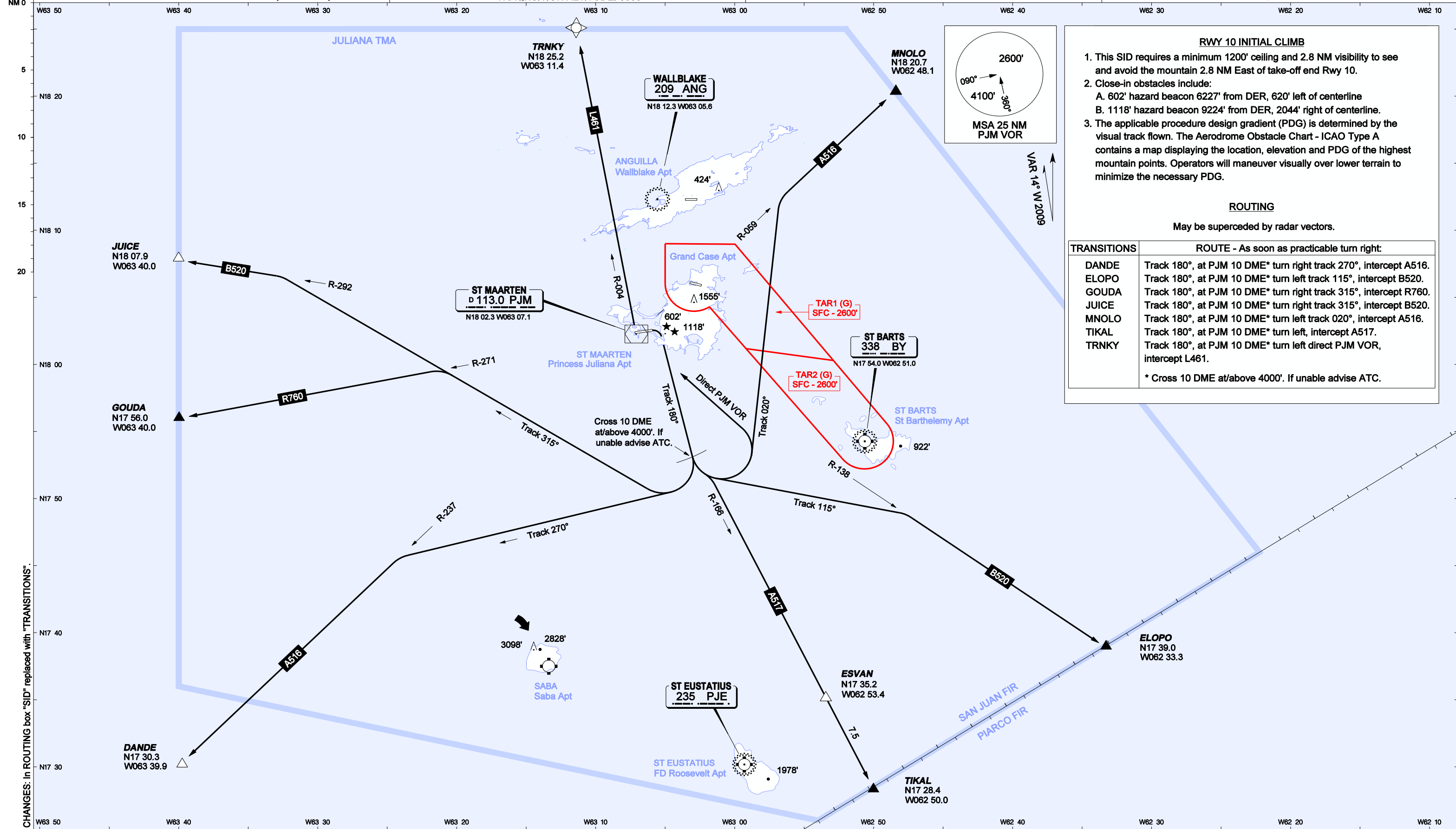
AIP DUTCH CARIBBEAN

SID - ICAO (RADAR REQUIRED)
PELICAN TWO DEPARTURE (PELCN2)

AERODROME ELEVATION: 14'
TRANSITION LEVEL: FL65
TRANSITION ALTITUDE: 5000'

JULIANA APPROACH: 128.95 (PRIMARY), 118.7
JULIANA TOWER: 118.7

PRINCESS JULIANA INT'L (TNCM)
PHILIPSBURG, ST MAARTEN



RWY 10 INITIAL CLIMB

- This SID requires a minimum 1200' ceiling and 2.8 NM visibility to see and avoid the mountain 2.8 NM East of take-off end Rwy 10.
- Close-in obstacles include:
 - 602' hazard beacon 6227' from DER, 620' left of centerline
 - 1118' hazard beacon 9224' from DER, 2044' right of centerline.
- The applicable procedure design gradient (PDG) is determined by the visual track flown. The Aerodrome Obstacle Chart - ICAO Type A contains a map displaying the location, elevation and PDG of the highest mountain points. Operators will maneuver visually over lower terrain to minimize the necessary PDG.

ROUTING

May be superseded by radar vectors.

TRANSITIONS	ROUTE - As soon as practicable turn right:
DANDE	Track 180°, at PJJ 10 DME* turn right track 270°, intercept A516.
ELOPO	Track 180°, at PJJ 10 DME* turn left track 115°, intercept B520.
GOUDA	Track 180°, at PJJ 10 DME* turn right track 315°, intercept R760.
JUICE	Track 180°, at PJJ 10 DME* turn right track 315°, intercept B520.
MNOLO	Track 180°, at PJJ 10 DME* turn left track 020°, intercept A516.
TIKAL	Track 180°, at PJJ 10 DME* turn left, intercept A517.
TRNKY	Track 180°, at PJJ 10 DME* turn left direct PJJ VOR, intercept L461.

* Cross 10 DME at/above 4000'. If unable advise ATC.

CHANGES: In ROUTING box "SID" replaced with "TRANSITIONS".